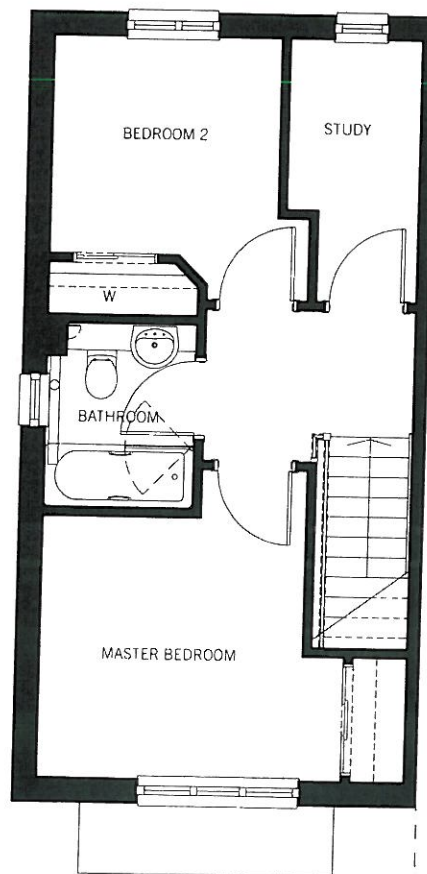
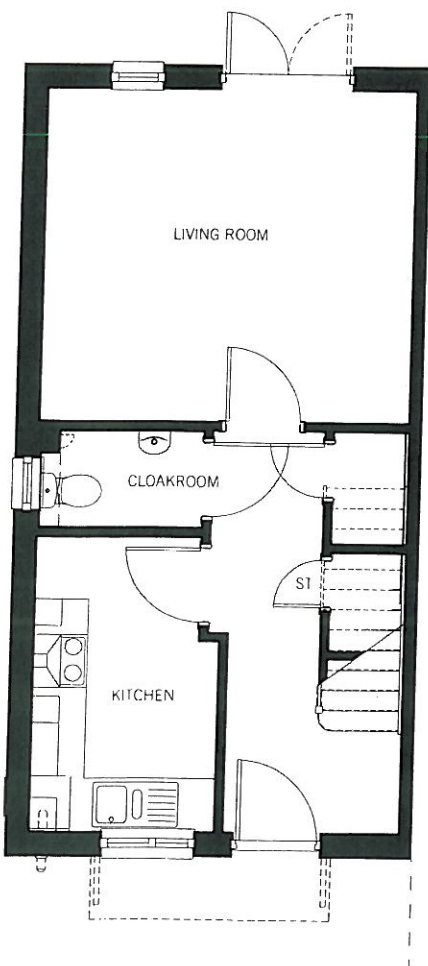


The Abbey

This delightful mews home offers a stylish fitted kitchen downstairs and a spacious living room with French doors leading on to the rear garden. The ground floor also has spacious storage cupboards and a cloakroom.

Upstairs there is a light and airy master bedroom with built-in wardrobe with mirrored sliding doors, a family bathroom with shower over bath, a further double bedroom with built-in wardrobe and useful third room that could easily be utilised as a study or nursery.



GROUND FLOOR

Kitchen	2030mm (max) x 3325mm (max) 6' 8" x 10' 11"
Living room	4165mm x 3765mm 13' 8" x 12' 4"
Cloakroom	1800mm x 1075mm 5' 11" x 3' 6"

FIRST FLOOR

Master bedroom	3450mm (max) x 3500mm (max) 11' 4" x 11' 6"
Bedroom 2	2580mm (max) x 2470mm (max) 8' 6" x 8' 1"
Study	1470mm (max) x 2980mm (max) 4' 10" x 9' 9"
Bathroom	1690mm (max) x 2070mm (max) 5' 7" x 6' 10"